

# Irrigation Water Meters - 50mm to 300mm Single Jet

## Application

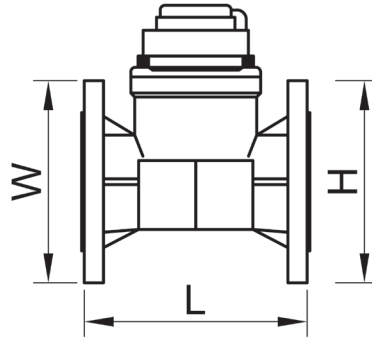
For use in agricultural, commercial turf and landscaping irrigation systems where total water usage is required.

A factory fitted pulse output enables the water meter to be connected to a suitable irrigation controller to monitor flow rates and the controller to create flow alarms for valve and mainline failure.

Not suitable for Water Authority metering.

## Features

- Highly reliable, long term meter accuracy
- Completely sealed dial – Stops moisture entering.
- The body is made of high quality brass with anti-corrosion baked powder internal and external surface treatment
- Minimal moving parts – less maintenance
- Maximum working temperature: 50°C
- Factory fitted pulsed output standard
- Table D flange inlet/outlet
- 12 Month Replacement Warranty



## Ordering Information

Code	Description
WMSJ-050-P100	50mm Single jet meter, 100L/pulse, paddle style, Table D flange
WMSJ-080-P100	80mm Single jet meter, 100L/pulse, paddle style, Table D flange
WMSJ-100-P100	100mm Single jet meter, 100L/pulse, paddle style, Table D flange
WMSJ-150-P100	150mm Single jet meter, 100L/pulse, paddle style, Table D flange
WMSJ-200-P1000	200mm Single jet meter, 1,000L/pulse, paddle style, Table D flange
WMSJ-300-P10000	300mm Single jet meter, 10,000L/pulse, paddle style, Table D flange

## Specifications

SIZE (mm)	50	80	100	150	200	300
Operation	Single jet, paddle	Single jet, paddle	Single jet, paddle	Single jet, paddle	Single jet, paddle	Single jet, paddle
Overload Flow m <sup>3</sup> /h (Q max)	30	80	120	300	500	1200
Permanent Flow m <sup>3</sup> /h (Qn)	15	40	60	150	250	600
Transitional Flow m <sup>3</sup> /h +/-2% (Qt)	4.5	12	18	45	75	180
Minimum Flow m <sup>3</sup> /h +/-5% (Q min)	1.2	3.2	4.8	12	20	48
Minimum Reading (l)	0.01	0.01	0.01	0.01	0.01	0.01
Maximum Reading (m <sup>3</sup> )	9999999.99	9999999.99	9999999.99	9999999.99	9999999.99	9999999.99
Maximum Operating Pressure (Bar)	16	16	16	16	16	16
Litres / Pulse	100	100	100	100	1,000	10,000
Length (L) (mm)	200	225	250	300	350	450
Width (B) (mm)	165	200	220	285	340	445
Height (H) (mm)	267	295	306	351	393	491
Weight (kg)	11.7	14.3	17.6	26.8	38.8	81.7
Meter Classification	Metrological class A to ISO 4064					