



Solenoids and Bases

For use within irrigation systems on automatically controlled valves for hydraulic, filter flushing, Radio-Master and Gulf valve systems

3 way, 2 wire, 24VAC Normally Closed Solenoid Pilot Valve

Code: S390-3DB24VAC
 Power: 3.5 Watts
 Voltage: 24VAC
 Inrush Current: 0.20 Amps
 Holding Current: 0.20 Amps
 Ports: 1/8" NPT (female)
 Operation: 3 way, normally closed

Cable Colours: Orange/Blue
 On/Off Handle: White
 Orifice Size: 1.8mm
 Pressure Rating: 1000 kPa



3 way, 2 wire, 12-50VDC Latching Solenoid Normally Open Pilot Valve

Code: 982-3B
 Power Voltage: 12-50VDC
 Coil Resistance: 4.2 ohms
 Pulse Width: 20-100ms
 Ports: 1/8" NPT (female)
 Operation: 3 way, normally closed

Latching

Cable Colours: Red/Black
 On/Off Handle: Green
 Orifice Size: 2.2mm
 Pressure Rating: 1000 kPa
 +Red & - Black: Solenoid vents
 +Black & - Red: Solenoid pressurizes



3 way, 3 wire, 12-50VDC Latching Solenoid Normally Open Pilot Valve

Code: S-985
 Voltage: 12-50VDC Latching
 Coil Resistance: 4.2 ohms ON, 7.5 ohms OFF
 Pulse Width: 20-100ms
 Ports: 1/8" NPT (female)
 Operation: 3 way, normally closed
 Cable Colours: Red/Black/White

On/Off Handle: Green
 Orifice Size: 2.2mm
 Pressure Rating: 1000 kPa
 + White: Fixed common
 - Red: Solenoid vents
 - Black: Solenoid pressurizes



3 way, 3 wire, 9-40 VDC Latching Solenoid, Normally Open/Closed Pilot Valve

Code: 1014872
 Voltage: 9-40 VDC Latching
 Coil Resistance: 3.0 ohms
 Pulse Width: 20-100ms
 Ports: 1/8" BSP (female)
 Operation: 3 way, normally closed/open
 Cable Colours: Red/Black/White

On/Off Handle: Black
 Orifice Size: 5.8mm
 Pressure Rating: 1000 kPa
 White: Fixed common+
 Red: Latching
 Black: Unlatching



MFS0108



MFS0126

3 way, 2 wire, 24VAC Solenoid Normally Open Pilot Valve

Code: MFS0108

Power: 3 Watt
Voltage: 24VAC
Inrush Current: 125mA
Holding Current: 125mA
Ports: 1/8" BSP (female)

Materials:

Base and manual override
Seals
Solenoid Housing
Plunger and Pole
Rubber Seat
Encapsulate

Operation: 3 way, normally open
Cable Colours: Red/Black
On/Off Handle: Red
Orifice Size: 1.2mm
Pressure Rating: 1200 kPa

Reinforced Nylon
EPDM
Reinforced Nylon 66
Passivated AIS1430F EPDM
EPDM
Polyurethane

3 way, 2 wire, 24VAC Solenoid Normally Open Pilot Valve

Code: MFS0126

Power: 5.5 Watt
Voltage: 24VAC
Inrush Current: 1.08 Amps
Holding Current: 0.6 Amps
Ports: 1/8" BSP (female)

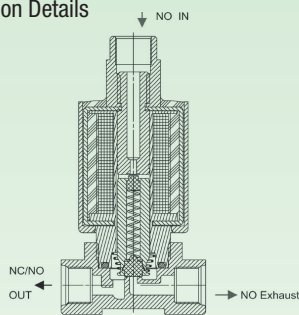
Materials:

Base and manual override
Seals
Solenoid Operator

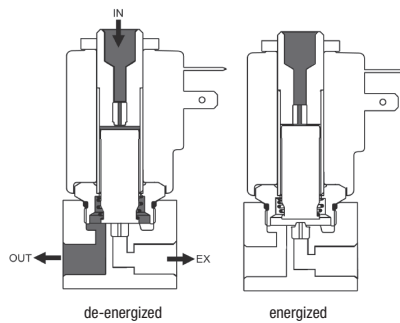
Cable Colours: Cables not supplied
On/Off Handle: Brass screw
Orifice Size: 1.6mm
Pressure Rating: 1200 kPa
Operation: 3 way, normally open

Brass
EPDM
Stainless steel 300 & 400 series

Connection Details



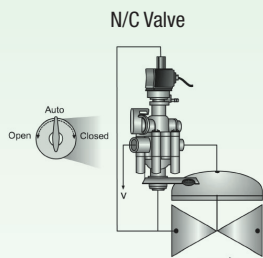
MFS0108



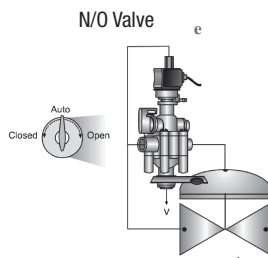
MFS0126



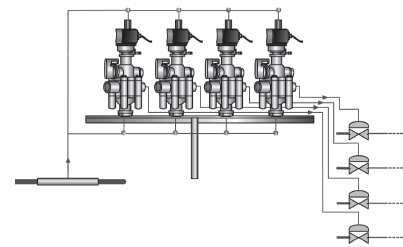
S-985,982-3B



N/C Valve



N/O Valve



**3 way, 2 wire, 24VAC Normally Open Solenoid Pilot Valve**

Code: S390-3WR24VACB0

Power: 2.9 Watts

Voltage: 24VAC

Inrush Current: 460mA

Holding Current: 240mA

Ports: 1/8" NPT (female)

Operation: 3way, normally open

Cable Colours: Red, 80cm

On/Off Handle: White

Orifice Size: 1.8mm

Pressure Rating: 1000 kPa

Coil Resistance: 21 ohms

Use: Gulf and Oval N/C valves

**3 way, 2 wire, 12VDC Normally Open Solenoid Pilot Valve**

Code: S200-3W-12VDC

Power: 3.8 Watts

Voltage: 12VDC

Inrush Current: 320mA

Holding Current: 320mA

Ports: 1/8" NPT (female)

Operation: 3way, normally open

Cable Colours: Blue, 80cm

On/Off Handle: Black

Orifice Size: 1.8mm

Pressure Rating: 1000 kPa

Coil Resistance: 38 ohms

Use: DC MicroMaster